

# LIGHT FRAME COUNT SYSTEMS

**CountMaster™**

**LFHC-21 System for Health Care and Hotel/Motel Bulk Soil Counting**

The Command Station Touch Screen displays the following items and more...

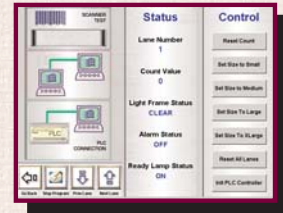
- Customer ID
- Operator ID
- Light Frame number
- Item Description
- Item Icon
- Quantity Counted
- Wash load Status
- Count Load Weight
- Abused Items found
- Plus or Minus Adjustments
- Manual Count Button
- System Operational Status Screen

System Tracking Capabilities:

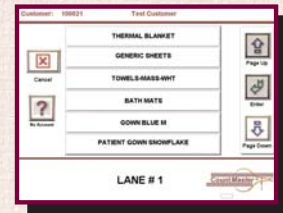
- By the Customer
- By the Ticket
- By the Item
- By the Operator
- By the Light Frame number



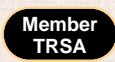
*Maintenance Screen*



*Item Select Screen*



*Developing Automation at the Speed of Technology!*



Call Toll-Free  
**1-877-482-7200**  
[www.adllc.com](http://www.adllc.com)

605 N. High Street, Independence, MO 64050  
Tel: 816.461.8989 Fax: 816.461.8889

**Need a custom solution? You name it, we'll make it!**

## LIGHT FRAME COUNT SYSTEMS

**CountMaster™**

**LFHC-21 System for Health Care and  
Hotel/Motel Bulk Soil Counting**

### SYSTEM FUNCTIONALITY:

- One Command Station will handle up to 10 or more Light Frames
- Count to Quantity or Weight
- Assign a weight to each item.
- Full Sling Indicator Light
- Assign an Item to each Light Frame
- Operator can add, delete or edit
- Multi-language options
- Extremely Accurate Counting
- Send all information to the Host
- Maintenance Screen.



### SPECIFICATIONS:

- Steel or Stainless Steel construction
- Frame Size - from 15 inches to 6 foot Sq. - 24" x 24" ID is standard
- All controls are UL Approved
- Controls are 24V DC
- Cabling to each light frame is a quick disconnect fitting
- 110V to Command Center @ 5 Amps, 60Hz - Dedicated
- Touch Screen is 14" CRT
- Laser Scanner is Auto Discriminating
- Compressed air or 3 phase electrical is not required.

### REPORTS:

- Bulk Count Report by Customer
- Bulk Count Report
- Soil Date Range
- Count Date Range
- Customer Range

### LIGHT FRAME MOUNTING OPTIONS:

- Roll-a-round Carts
- Wall Mount Shelves
- Fold up to 1' deep hide-away tables that fold out to almost 6 foot.
- Training Pal - A portable light frame that can be assembled onto various equipment to track the production and accuracy of new employees
- All Painted Steel or Stainless Steel

The examples and pictures in this brochure are just a beginning of the different possibilities these products can make available for counting in your plant. Please let us create a solution in your plant that is exactly tailored to your needs. For the best performance let us size a system for you. Custom CAD drawings are available upon request.

You deserve to have the technology at your fingertips to improve productivity, reduce labor and stay a step ahead in your highly competitive market. We would like to assist you with the automation and technology to do just that. Call us Toll-Free to set up an appointment to judge for yourself why Automation Dynamics is the vendor of choice.

**Need a custom solution? You name it, we'll make it!**